



KEARNEY INDUSTRIAL DEVELOPMENT LAND

972 W. Innovation Drive, Kearney, Missouri



SALE PRICE: \$100,000 | 1.01 ACRES

DEMOGRAPHICS

	1 mile	3 miles	5 miles
Estimated Population	2,394	13,412	17,856
Avg. Household Income	\$67,874	\$105,413	\$111,753

- Ready to build industrial ground in Kearney MO
- Zoned M-1
- All utilities to site
- Located within a small industrial park
- Priced to sell

 [CLICK HERE TO VIEW MORE LISTING INFORMATION](#)

For More Information Contact:

Exclusive Agents

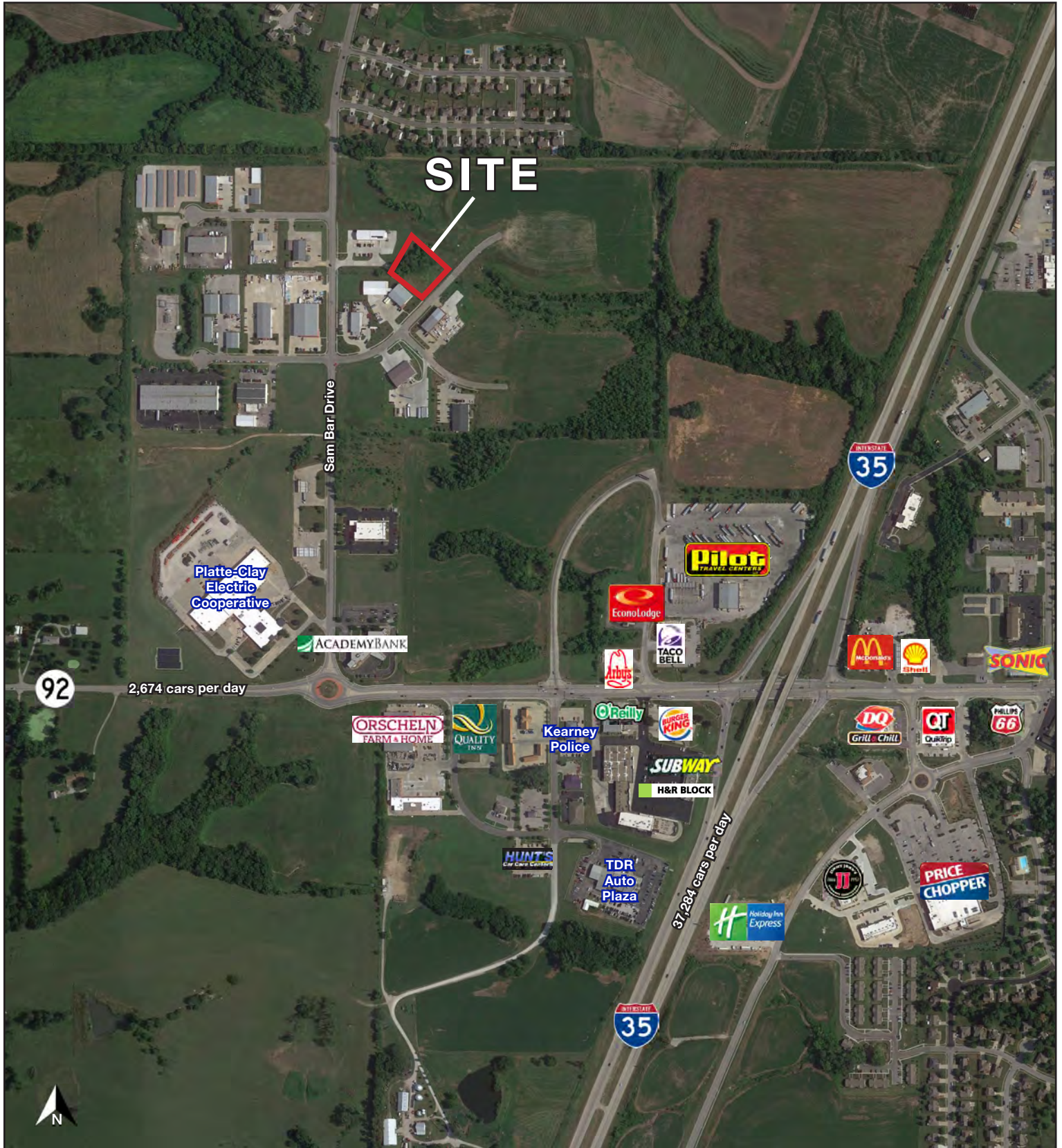
DAKOTA GRIZZLE | 816.412.7395 | dgrizzle@blockandco.com

GARRETT COHOON | 816.412.7315 | gcohoon@blockandco.com

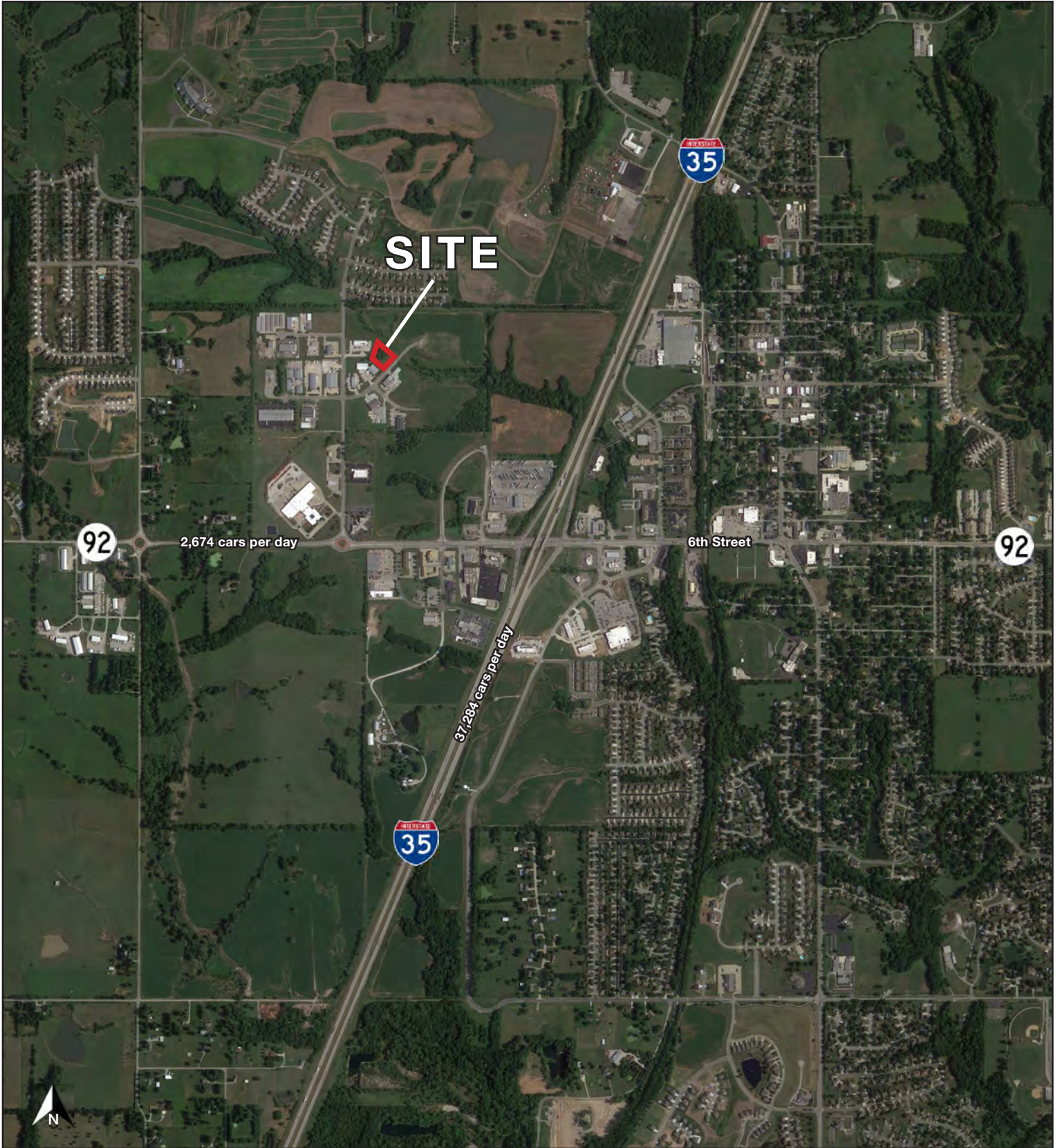
DANIEL BROCATO | 816.412.7303 | dbrocato@blockandco.com



AERIAL

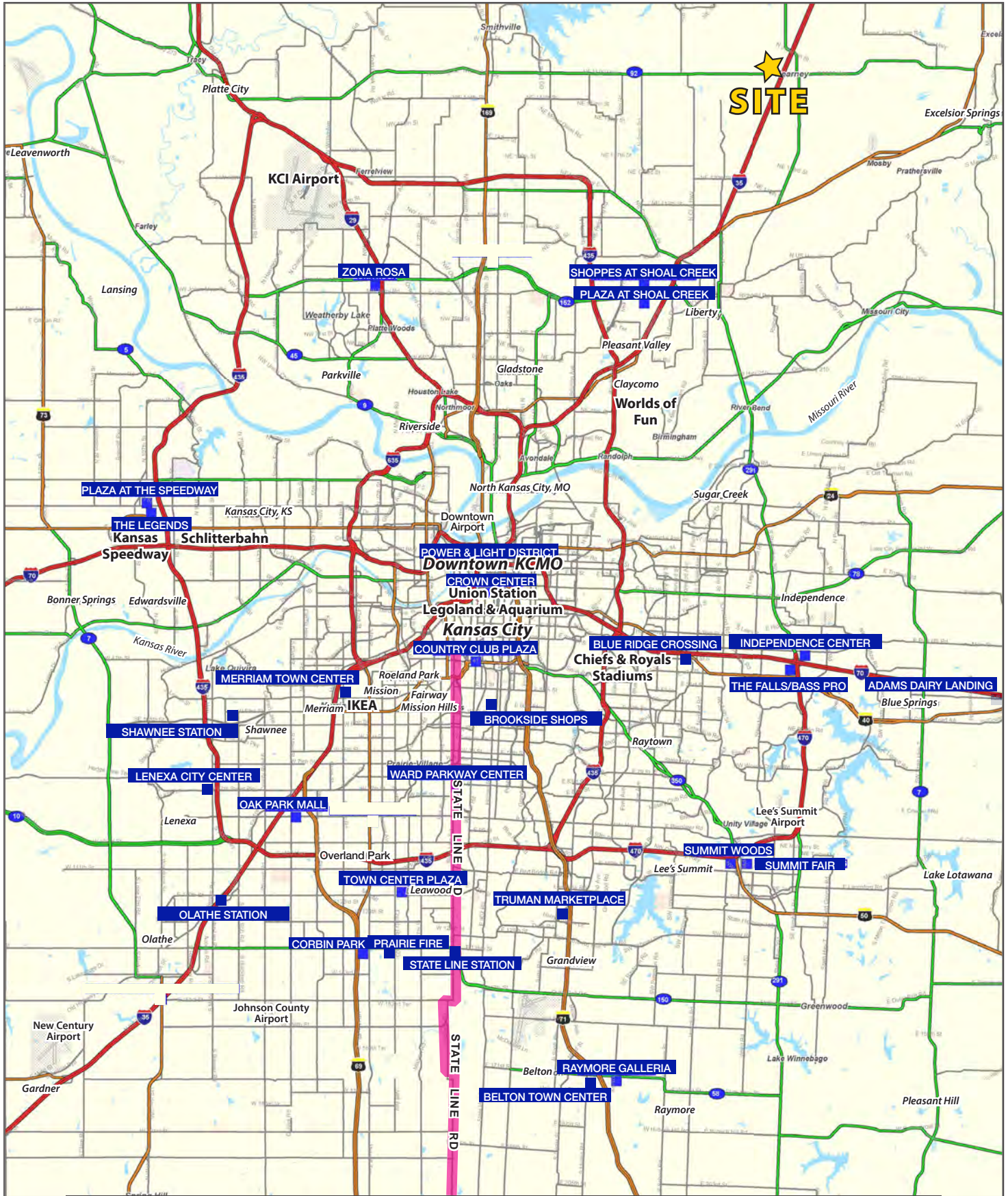


AERIAL



KEARNEY INDUSTRIAL DEVELOPMENT LAND

972 W. Innovation Drive, Kearney, Missouri





KEARNEY INDUSTRIAL DEVELOPMENT LAND

972 W. Innovation Drive, Kearney, Missouri

972 W. Innovation Drive Kearney, MO 64060	1 mi radius	3 mi radius	5 mi radius
Population			
2022 Estimated Population	2,394	13,412	17,856
2027 Projected Population	2,723	14,601	19,607
2020 Census Population	2,377	13,114	17,530
2010 Census Population	1,709	11,036	15,260
Projected Annual Growth 2022 to 2027	2.7%	1.8%	2.0%
Historical Annual Growth 2010 to 2022	3.3%	1.8%	1.4%
2022 Median Age	38.5	38.8	40.4
Households			
2022 Estimated Households	887	4,961	6,561
2027 Projected Households	1,028	5,503	7,336
2020 Census Households	880	4,832	6,418
2010 Census Households	625	3,937	5,441
Projected Annual Growth 2022 to 2027	3.2%	2.2%	2.4%
Historical Annual Growth 2010 to 2022	3.5%	2.2%	1.7%
Race and Ethnicity			
2022 Estimated White	93.0%	93.3%	93.2%
2022 Estimated Black or African American	1.2%	0.8%	0.9%
2022 Estimated Asian or Pacific Islander	0.6%	0.9%	0.8%
2022 Estimated American Indian or Native Alaskan	0.2%	0.3%	0.2%
2022 Estimated Other Races	5.1%	4.8%	4.9%
2022 Estimated Hispanic	3.8%	3.6%	3.7%
Income			
2022 Estimated Average Household Income	\$67,874	\$105,413	\$111,753
2022 Estimated Median Household Income	\$85,586	\$90,381	\$92,269
2022 Estimated Per Capita Income	\$25,201	\$39,014	\$41,088
Education (Age 25+)			
2022 Estimated Elementary (Grade Level 0 to 8)	0.7%	1.0%	1.0%
2022 Estimated Some High School (Grade Level 9 to 11)	4.5%	4.1%	3.6%
2022 Estimated High School Graduate	29.0%	26.0%	24.7%
2022 Estimated Some College	22.4%	26.3%	26.1%
2022 Estimated Associates Degree Only	7.5%	8.3%	8.5%
2022 Estimated Bachelors Degree Only	20.6%	19.7%	22.1%
2022 Estimated Graduate Degree	15.2%	14.7%	14.0%
Business			
2022 Estimated Total Businesses	241	401	472
2022 Estimated Total Employees	2,255	3,783	4,183
2022 Estimated Employee Population per Business	9.4	9.4	8.9
2022 Estimated Residential Population per Business	9.9	33.4	37.8

©2023, Sites USA, Chandler, Arizona, 480-491-1112 Demographic Source: Applied Geographic Solutions 11/2022, TIGER Geography - RS1

This report was produced using data from private and government sources deemed to be reliable. The information herein is provided without representation or warranty.

